

Section 1. Introduction

This manual contains an outline of the SAMSUNG OPOS DRIVER program, and provides installation and setup instructions for the OPOS Setup program. Throughout the manual, “OLE for Retail POS” is called “OPOS”.

SAMSUNG OPOS DRIVER Setup contains software with API functions that can be used easily through OLE controls supported by Visual Basic and Visual C++ on a computer running Windows 95, Windows98, Windows NT 4.0, Windows 2000, or Windows XP platforms. Application developers using the Windows95, Windows98, Windows NT 4.0, or Windows 2000 Windows XP operating systems, without any concern for attached peripherals type or protocol, can develop real-time, multitasking, GUI-based, POS applications with lots of functionality.

Section 2, Development Outline, describes the requirements and uses of SAMSUNG OPOS DRIVER, and lists what is included in the package. Please read this section before installing the program.

Section 3, Installation contains directions on how to install and uninstall the program.

Section 4, SetupPOS Utility shows you how to use the program to record information about OPOS devices in the system registry.

The OLE for Retail POS Application Programmer’s Guide, Release 1.5, created by the OLE for Retail POS committee, describes API functions in detail. The Application Development Guide describes application development. Please refer to these manuals for information on these subjects.

Section 2. Development Outline

This section describes development outline for the SAMSUNG OPOS DRIVER.

2.1. Features

SAMSUNG OPOS DRIVER offers standardized API functions that interface with peripherals used in POS systems through OLE controls that can be run in Visual Basic or Visual C++, operating on the Windows 95, Windows 98, Windows NT4.0, Windows 2000 or Windows XP platforms. Through these standardized API functions, you can develop powerful, open POS systems easily.

2.2. Operating Environment

The SAMSUNG OPOS DRIVER operates under the following environment.

[Computer Hardware]

IBM PC/AT or compatible

[Operating Systems]

Windows95 Standard, OSR2.5

Windows 98 Second Edition,

Windows NT 4.0 SP5, SP6

Windows 2000

Windows XP

[Accessible Serial Ports]

COM1, COM2, COM3, COM4

[Accessible Parallel Ports]

LPT1, LPT2

[Accessible USB ports]

SSUSB1

[Supported Languages]

Microsoft Visual Basic Version 6.0 or above

Microsoft Visual C++ Version 6.0 or above

[Accessible Devices]

POS Printers:

SRP-350, SRP-270, STP-131

Cash Drawer:

Standard Cash Drawer for SRP-350, SRP-270, STP-131

2.3. Necessary System Components

In order to develop an application using OPOS API, the following hardware and software components are necessary.

[Computer Body Parts]

IBM PC/AT Interchange Machine

[Operating System]

Windows 95, Windows 98, Windows NT Ver4.0,
Windows 2000, and windows XP

[Floppy Disk Drive]

One or more floppy disc drives

[Hard Disk, Memory]

At least 10M bytes hard disk capacity is needed except for recommended blank capacity of using OS (Windows 95, Windows 98, Windows NT 4.0, Windows 2000, and Windows XP).

USER'S GUIDE

Information on SAMSUNG OPOS DRIVER installation and setup.

APPLICATION DEVELOPMENT GUIDE

Programming examples and explanations of factors governing peripherals. The Application Development Guide is divided into common subjects and device subjects. The common subjects section contains general information about OPOS and device classes. The device subjects section contains information about specific devices. Please refer to common subjects and device subjects for the device being used.

APPLICATION PROGRAMMER'S GUIDE

Contains outlines, detailed explanations, and notes on the sample program included on the SAMSUNG OPOS DRIVER.

Section 3. Installation

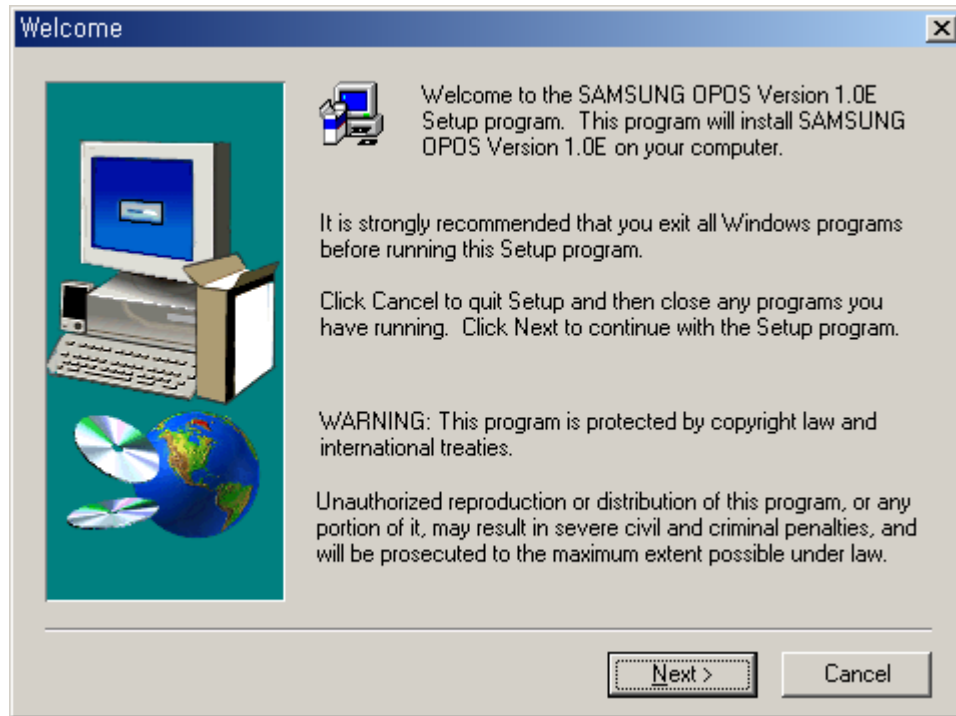
Running the SAMSUNG OPOS DRIVER Installer program can perform all the processing required for installation of the SAMSUNG OPOS DRIVER. To ensure optimal use of the OPOS, various functions are offered during installation. Please read this manual for details. When installing or reinstalling, first ensure that all running application programs are closed; both those using the OPOS files as well as any other applications. After installing of SAMSUNG OPOS DRIVER, it is necessary to confirm settings for both the port and device. Please refer to Section 4, "SetupPOS Utility" for details.

The SAMSUNG OPOS DRIVER install program is explained following.

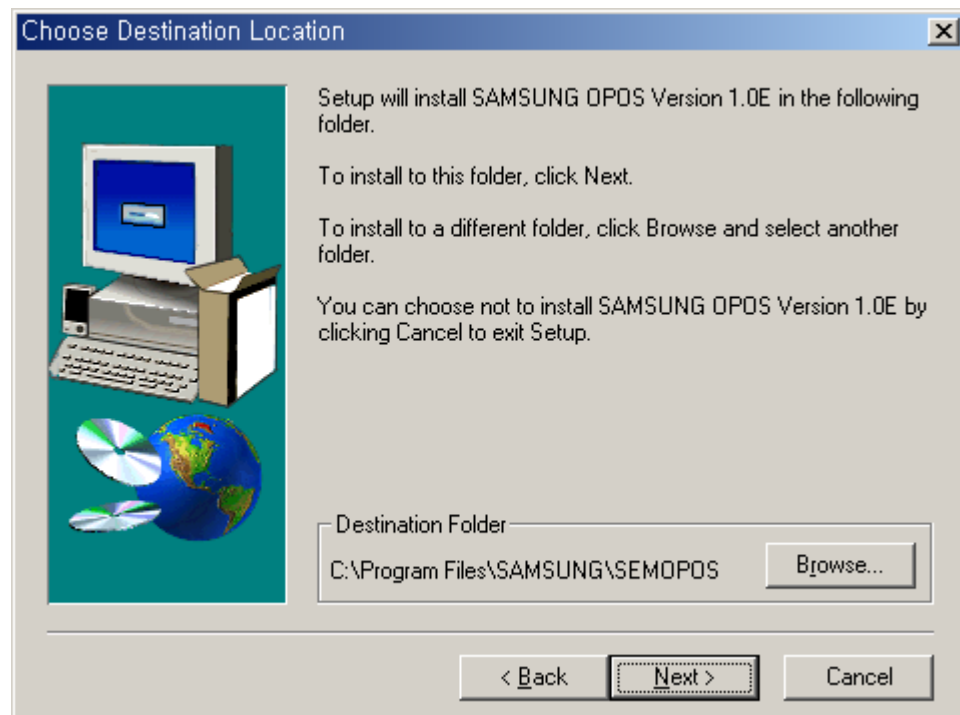
3.1. Installation

The installation procedure is described below.

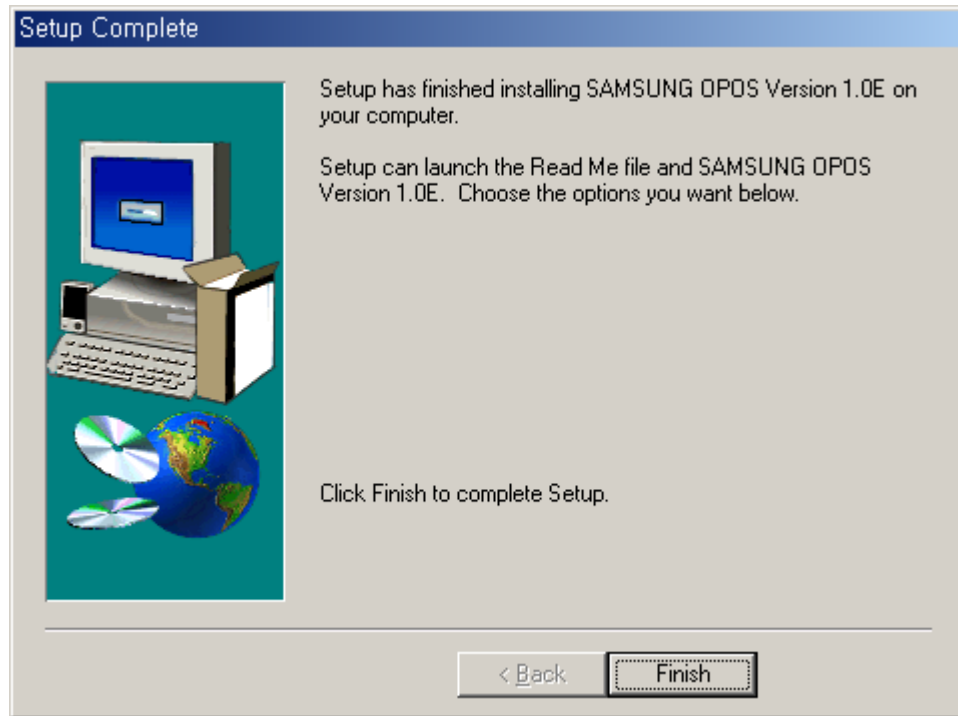
- 1) Execute SEMOPOS.EXE, Then you can see screen as follows.



2) Press the Next button, then set the folder for the driver installation.



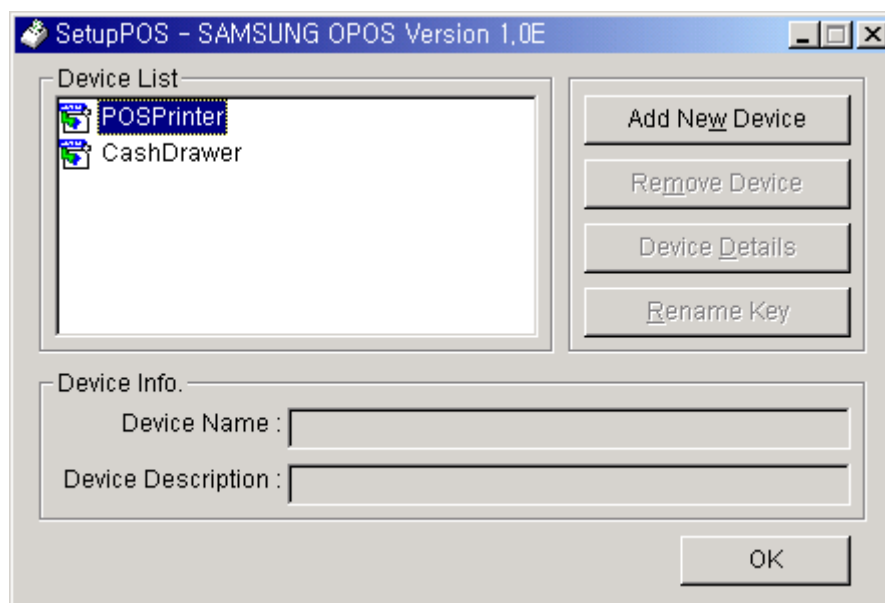
3) Press the Next button again to begin the installation. Finally, press the Finish button to the close program.



Section 4. SetupPOS Utility

If you install the SEMOPOS DRIVER, you can find the SetupPOS utility in the windows start menu as shown below.

Start → Program → SAMSUNG OPOS → SetupPOS



This program registers POS printers, like SRP350, SRP270, STP131 in the Windows system registry. Application programs can use devices only to register using SetupPOS. Before using offered sample programs or other POS programs, execute this program first to register the printer device connected in the present system. Devices available for registry as follows:

| Port | POS Printer | | | CashDrawer |
|----------|-------------|---------|---------|-------------------|
| | SRP-350 | SRP-270 | STP-131 | |
| Serial | SRP350 | SRP270 | STP131 | SEM_Standard |
| Parallel | SRP350P | SRP270P | STP131P | SEM_Standard P |
| USB | SRP350U | SRP270U | X | SEM_Standard U |

1.1 Device Registration

1.1.1 POS Printer

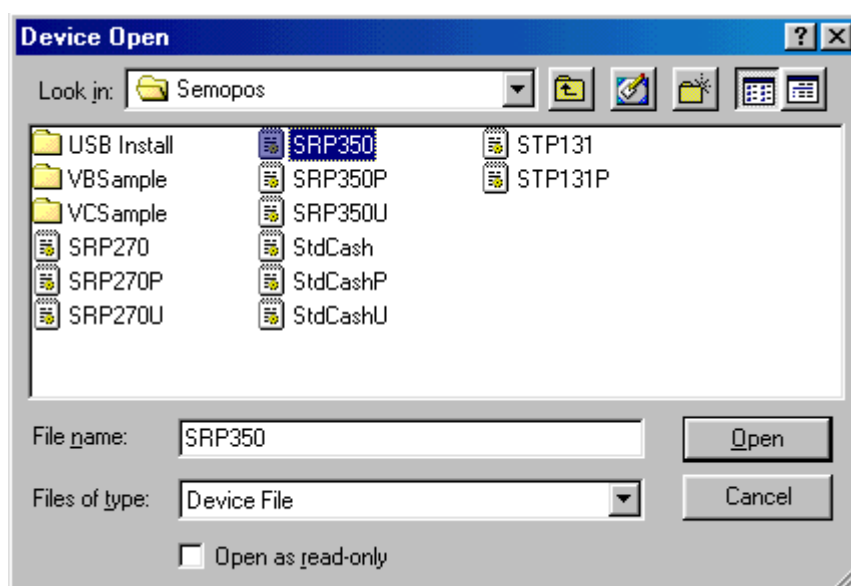
1) Serial device registration

You can register SRP-350, STP-131, SRP-270 serial devices.

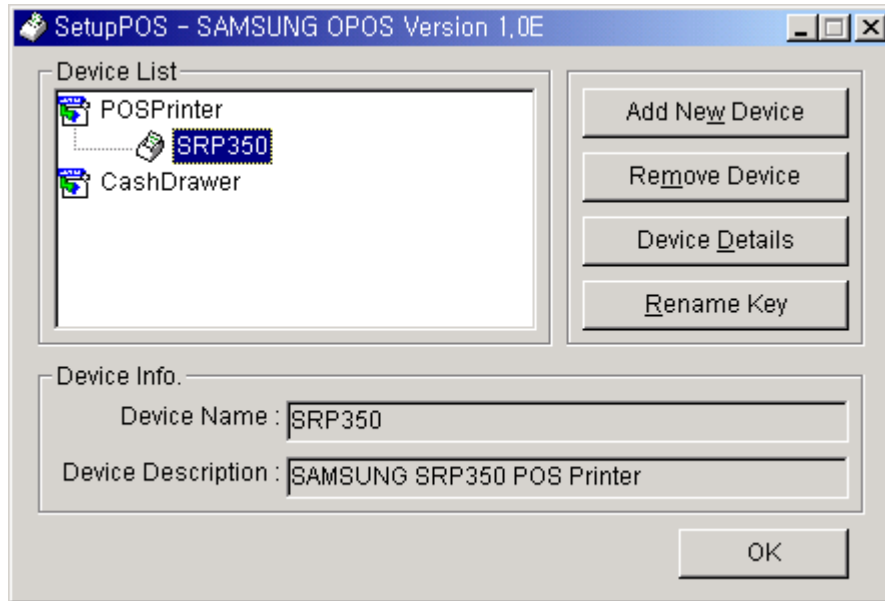
Each device stores information within files named SRP350.INF, STP131.INF, SRP270.INF

To register the SRP-350 serial device, press Add New Device button as shown below and select the SRP350.INF file.

--The screen to press Add New Device button [It depends on system]



-- The screen after selecting SRP350.inf



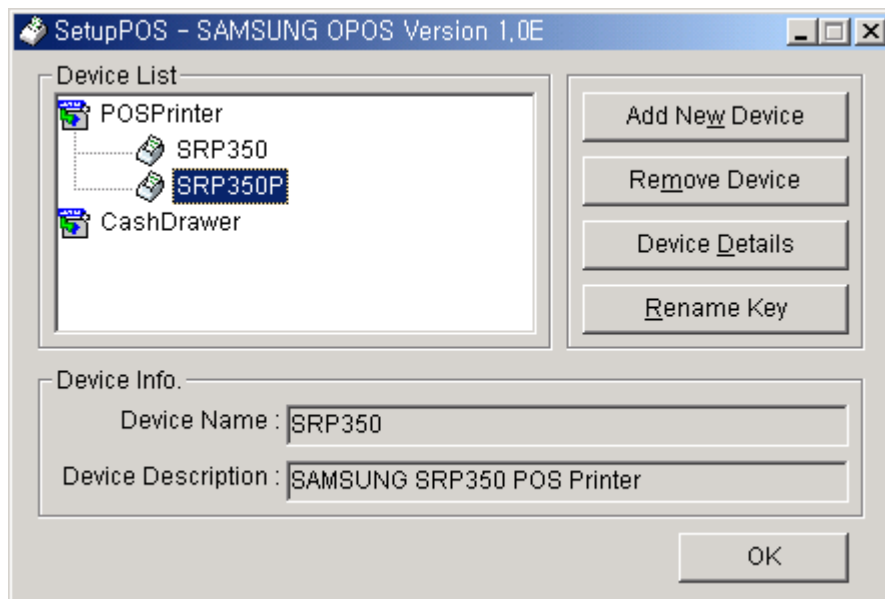
2) Parallel device registration

You can register SRP-350, STP-131, SRP-270 parallel devices.

Each device stores information within files named SRP350P.INF, STP131P.INF, and SRP270P.INF

To register parallel devices is the same as shown previously for serial devices.

-- The screen to register SRP350P

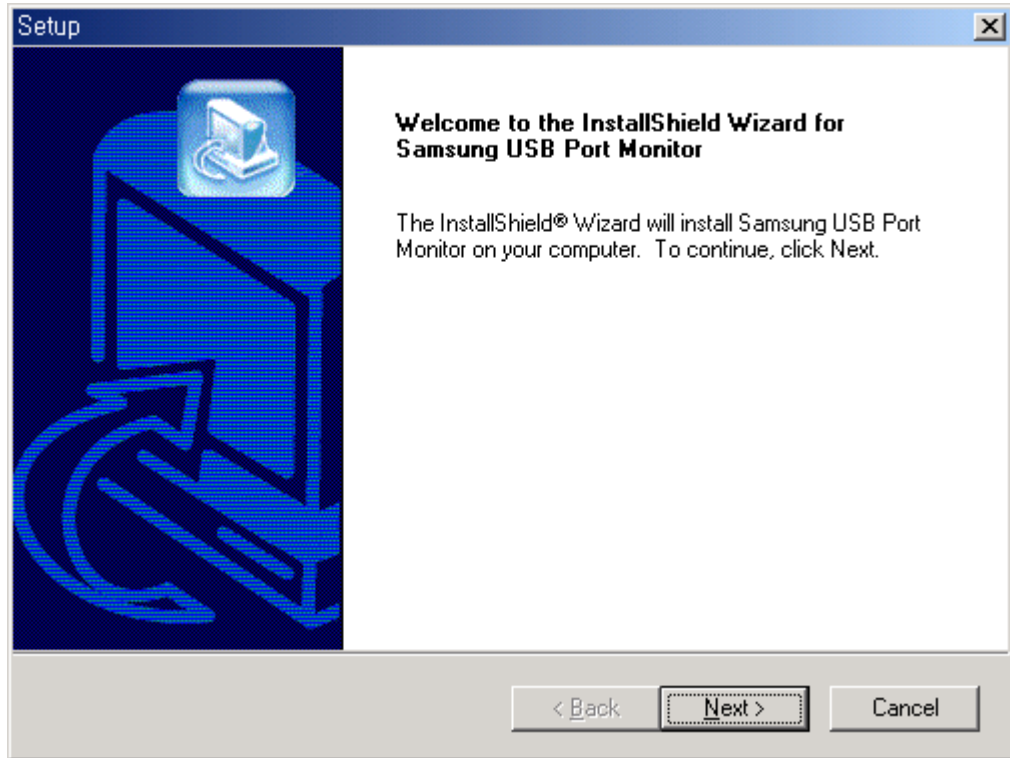


3) USB device registration

USB device must install driver first.

- USB driver installation method for Windows 2000

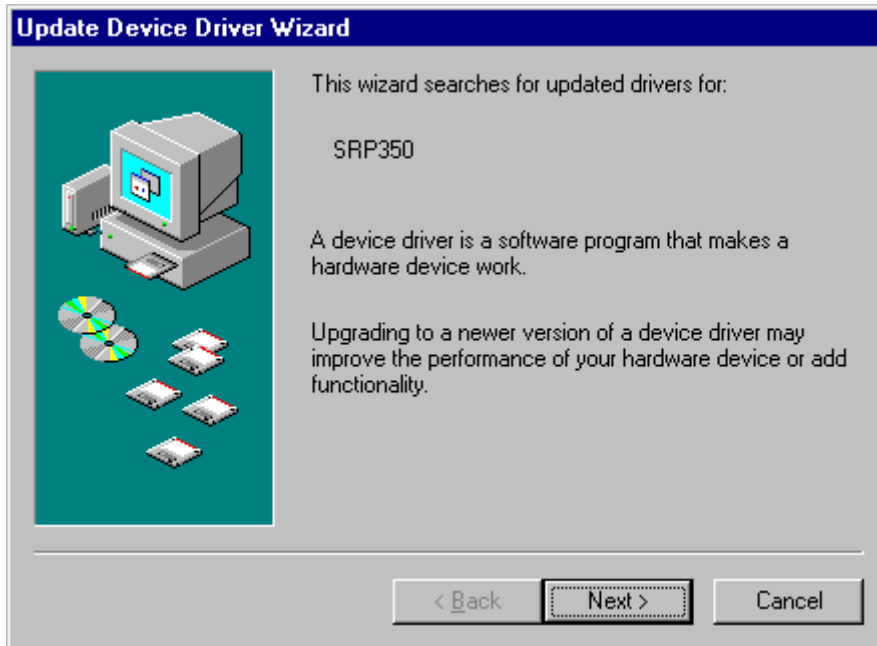
Find the **\USB Install\Win2000** sub folder within the default installation folder of SEMOPOS, then execute SamsungUSBPortMonitor.exe program



Press Next button continuously, to install the USB driver

- USB driver installation method for Windows 98

If you connect the USB printer and power is on, the system will find the appropriate USB device and a screen similar to the following will be shown.



Press the Next button continuously, then the screen, which specifies the driver location will be displayed as shown following.

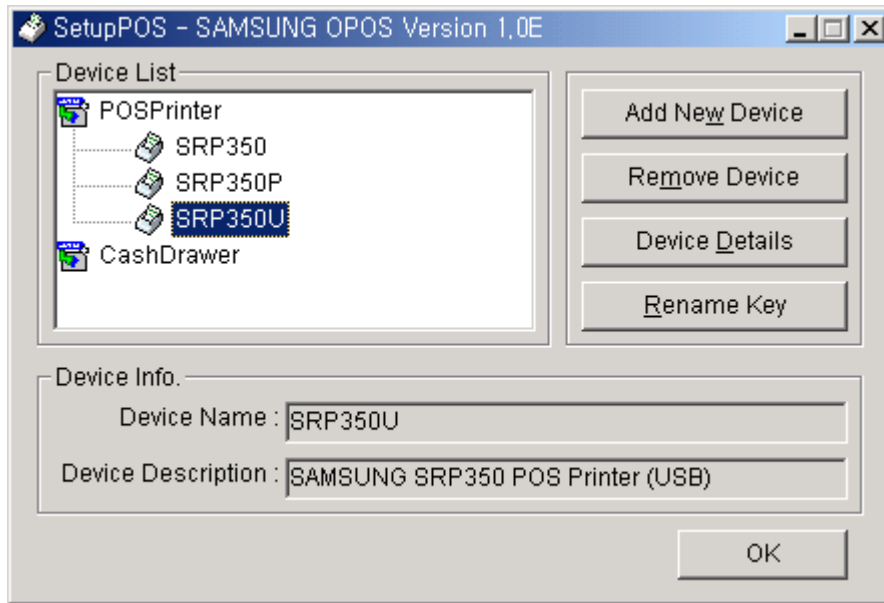


The driver is in **\USB Install\WIN98\SRP350** or **\USB Install\WIN98** sub folder within the default installation folder of SEMOPUS After specifying driver location of the appropriate device, press the Next button continuously to complete installation.

If you install the driver above and reboot the system, you can register the SRP-350, SRP-270 USB devices. Each device information is stored in SRP350U.INF, SRP270U.INF files. The way to register a device

method as for serial devices.

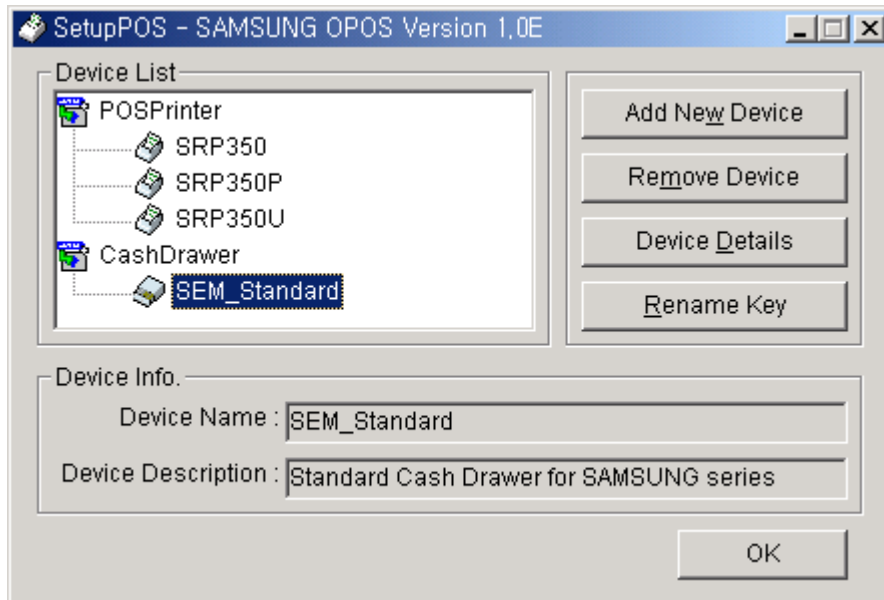
-- The screen to register SRP350U



1.1.2 Cash Drawer

The way to register a Cash Drawer device is same method as for POS printers. Please refer the registration method of POS printers.

-- The screen to register SEM_Standard [Select StdCash.INF]



1.2 Device Test

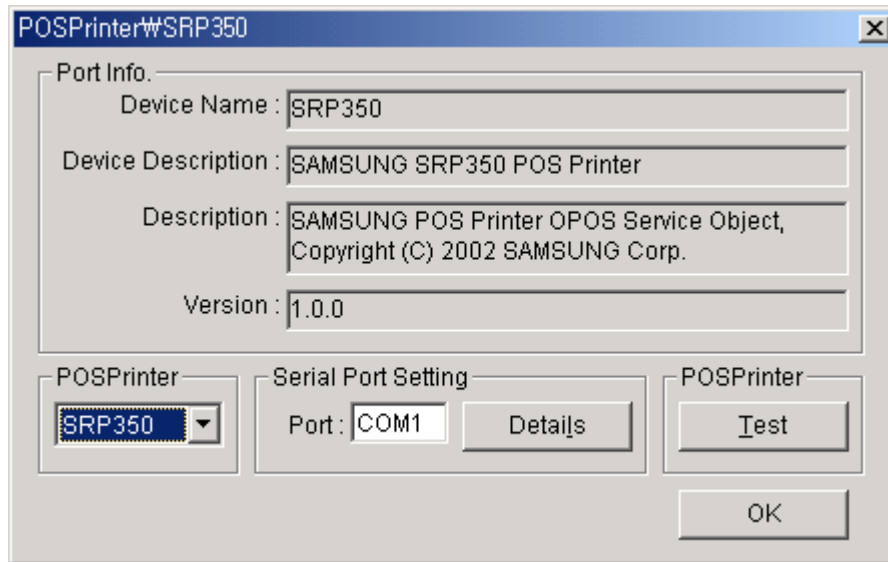
1.1.2 POS Printer

After registering check the device is available first. Then connect the printer cable correctly, and turn on the printer.

1) Serial device test

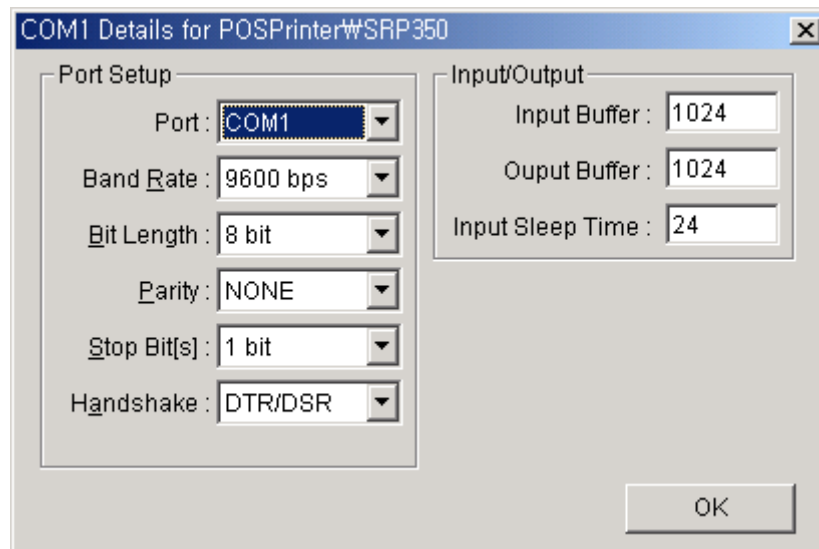
Select the serial device to test from the Device List and press the Device Details button, A screen similar to one following is displayed.

-- SRP350 device test screen



Press the Test button. If the printer prints normally, then press OK
 If an error message appears or you find a character fracture, you must ensure the communication settings are correct. At this time, press the Details button.

-- Communication setting change screen



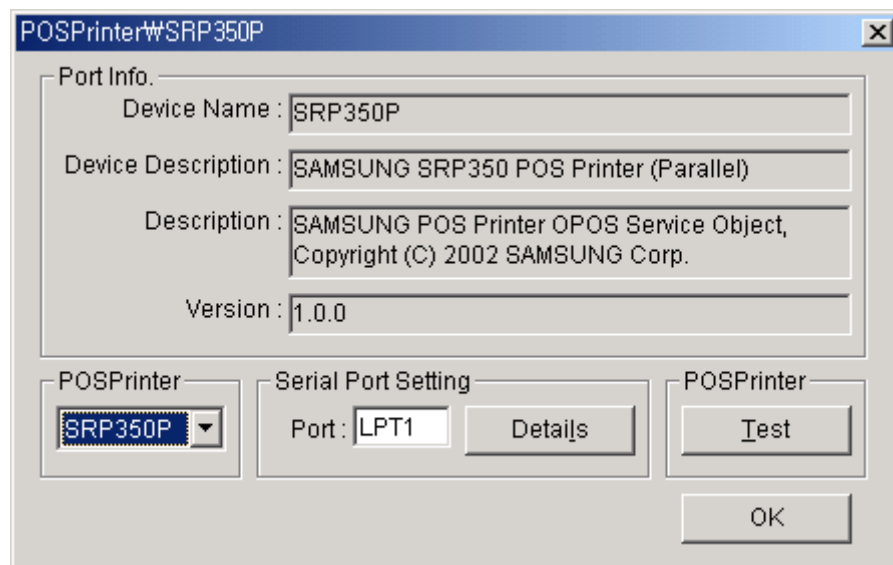
- If a print fractured character appears, then set the Band Rate value correctly.
- If a 101 error message appears, then set the Port value correctly. When other application programs already use port, this error message may also appear then. After finishing other application programs using the port, try again.
- If a 103 error message appears, check whether the port value setting is correct, also that power supplies for the printer and

printing paper are set correct. If the error appears continuously, set the value of Input Sleep Time ad high. When this value is lower, the printer can print faster but the error occurrence rate is higher. Setting the input sleep time too high will reduce print speed.

2) Parallel device test

Select the parallel device to test in the Device List and then press the Device Details button. A screen similar to the one shown below is displayed.

-- SRP350P device test screen



Press the Test button. If the printer prints normally, press the OK. If an error message appears, press the Details button and ensure the communication setting are correct.

Pressing the Test button when powering the printer power is off stops the program.

3) USB device test

Select the USB device to test in the Device List and press the Device Details button. The test method is the same as for serial devices. Refer to serial device test instructions.

1.1.2 Cash Drawer

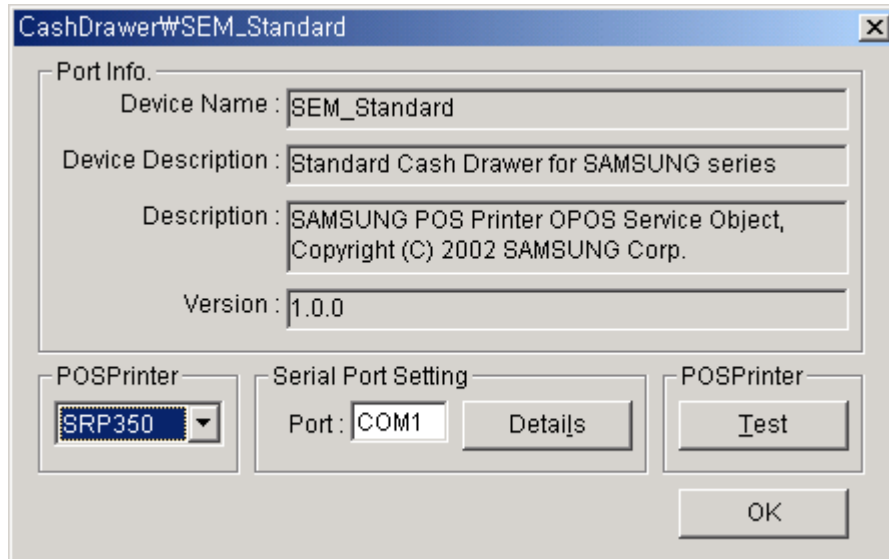
After registering the device, check first that the device is available. Ensure the printer cable is connected correctly and the printer power is

on, also the cash drawer is connected to the printer.

Cash Drawer device test

Select the Cash Drawer to test in the Device List and press the Device Details button. A screen similar to one the shown below will be displayed.

-- SEM_Standard device test screen

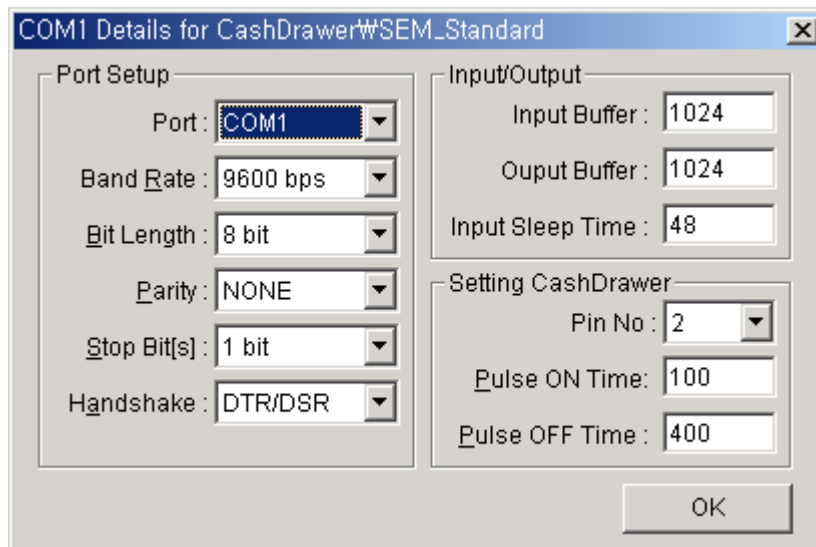


Set POS printer connected Cash Drawer. In above screen, we set SRP350 as a default value.

Press the Test button and check Cash Drawer is open.

If it is not open and error message appears then press the Details button.

-- Cash Drawer Communication setting change screen.



Set the same value of Port, Band Rate, Input Sleep Time of POS printer

communication setting correctly and try again. Set Pin No value differently.

1.3 Device removal and device name change

If the device is no longer required it is possible to remove this using the Remove Device button. Using Rename Key button, and changing device name.